

120pt Regular

Norman

120pt Italic

*Norman*

120pt Medium

Norman

120pt Medium Italic

*Norman*

120pt Bold Italic

***Norman***

120pt Bold

**Norman**

120pt Fat Italic

***Norman***

120pt Fat

**Norman**

40pt Regular

ABCDEFGHIJKLMNOPQRSTUVWXYZ

abcdefghijklmnopqrstuvwxyz

0123456789

40pt Italic

*ABCDEFGHIJKLMNOPQRSTUVWXYZ**abcdefghijklmnopqrstuvwxyz**0123456789*

40pt Medium

**ABCDEFGHIJKLMNOPQRSTUVWXYZ**

40pt Medium

abcdefghijklmnopqrstuvwxyz  
0123456789

40pt Medium Italic

*ABCDEFGHIJKLMN OPQRSTUVWXYZ*  
*abcdefghijklmnopqrstuvwxyz*  
*0123456789*

40pt Bold Italic

***ABCDEFGHIJKLMN OPQRSTUVWXYZ***  
***abcdefghijklmnopqrstuvwxyz***

40pt Bold Italic

***0123456789***

40pt Bold

**ABCDEFGHIJKLMNOPQRSTUVWXYZ**

**abcdefghijklmnopqrstuvwxyz**

**0123456789**

40pt Fat Italic

***ABCDEFGHIJKLMNOPQRSTUVWXYZ***

***abcdefghijklmnopqrstuvwxyz***

***0123456789***

40pt Fat

**ABCDEFGHIJKLMNOPQRSTUVWXYZ****abcdefghijklmnopqrstuvwxyz****0123456789**

50pt

			A	A	A	Á	Ă	Â	Ä	À	Ā	Ą	Å	Ã	Æ	B	B	Ɔ	C
.notdef	CR	space	A	A.ss02	A.swsh	Aacute	Abreve	Acircumflex	Adieresis	Agrave	Amacron	Aogonek	Aring	Atilde	AE	B	B.ss01	B.swsh	C

C	ç	ç	Ć	Č	Ç	Ĉ	Č	D	D	Đ	Ǳ	Đ	Ð	Ď	Ď	€	€	€	€	
C.ss01	C.ss02	C.ss03	Cacute	Ccaron	Ccedilla	Ccircumflex	Cdotaccent	D	D.ss01	D.swsh	Dcaron	Dcroat	uni1E0C	Eth	E	E.ss01	E.ss02	E.ss03	E.ss04	E.swsh

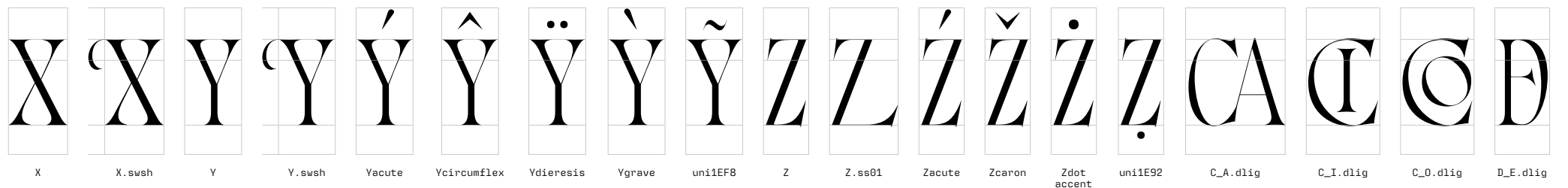
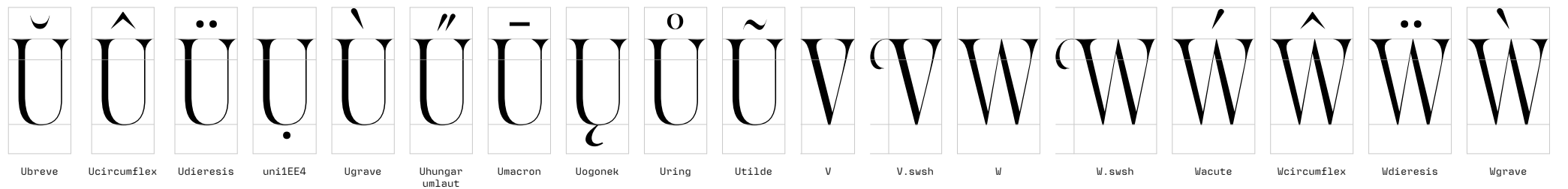
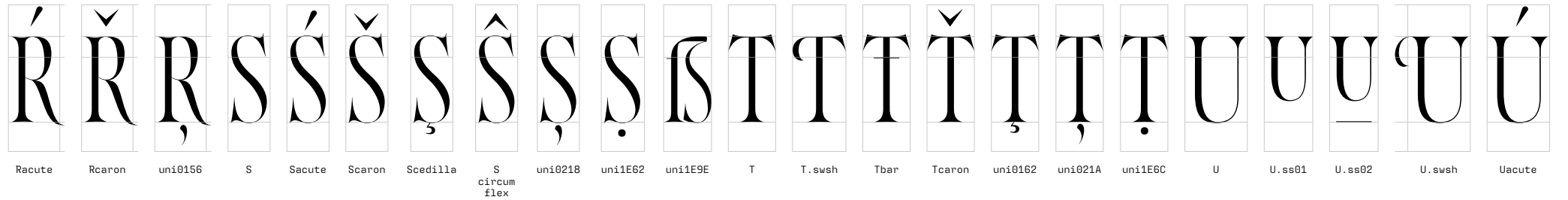
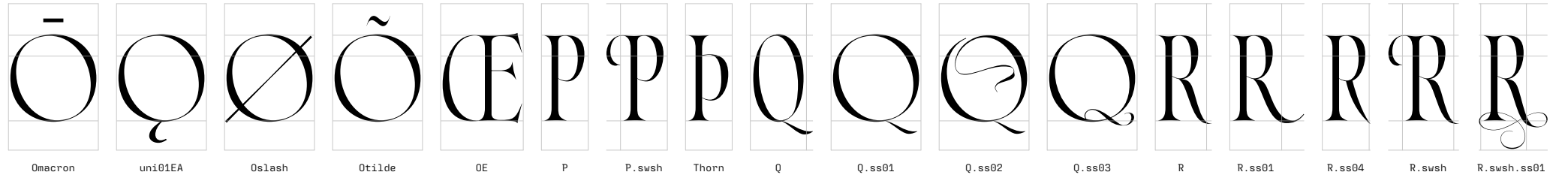
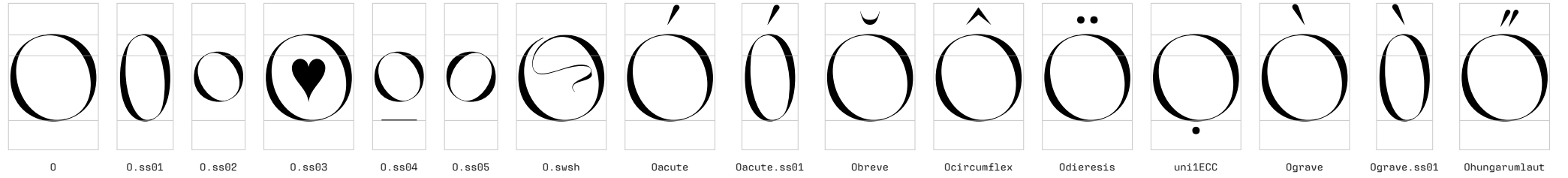
É	Ě	Ě	Ê	Ë	È	È	È	Ě	Ě	F	F	G	G	Ǻ	Ǻ	Ĝ	Ĝ	Ĝ	H	
Eacute	Ebreve	Ecaron	Ecircumflex	Edieresis	Edotaccent	uni1EB8	Egrave	Emacron	Eogonek	uni1EBC	F	F.swsh	G	G.ss01	uni01F4	Gbreve	Gcircumflex	uni0122	Gdotaccent	H

H	H	Ĥ	Ĥ	I	I	I	I	Í	Ĭ	Î	Ï	İ	İ	Ì	Ī	Į	Ĳ	Ĵ	Ĵ	K	K	Ɔ	L		
H.swsh	Hbar	Hcircumflex	uni1E24	I	I.ss01	I.ss02	I.swsh	Iacute	Ibreve	Icircumflex	idieresis	Idotaccent	uni1EC A	Igrave	I macron	Iogonek	Itilde	J	J.ss01	J.swsh	Jcircumflex	K	K.ss01	uni0136	L

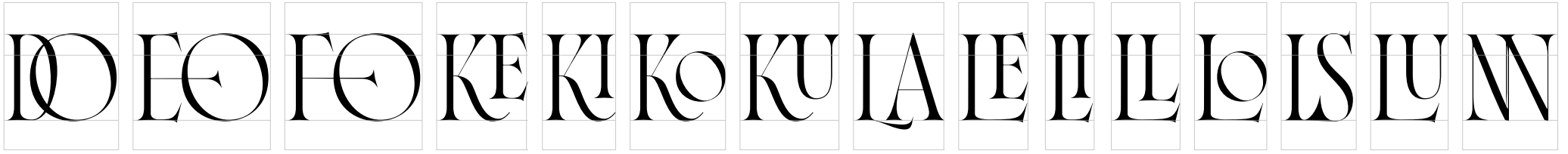
L	L	L	L	Ł	Ł	Ł	Ł	Ł	M	M	M	N	N	Ń	Ń	Ń	Ń	Ń	Ń	Ń	Ń	Ń	Ń
L.ss01	L.ss02	L.ss03	L.swsh	Lacute	Lcaron	uni013B	Ldot	Lslash	M	M.ss02	M.swsh	N	N.swsh	Nacute	Ncaron	uni0145	uni1E44	Ntilde	Eng				



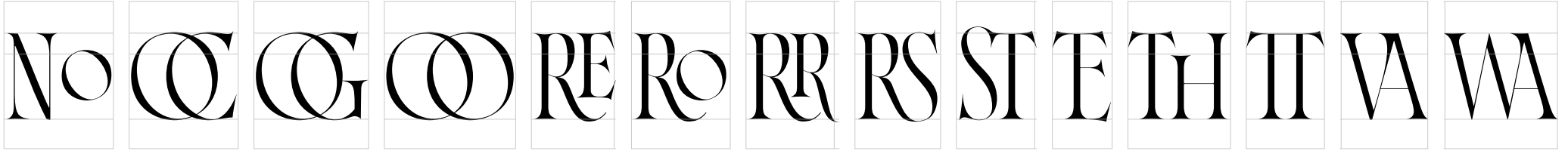
50pt



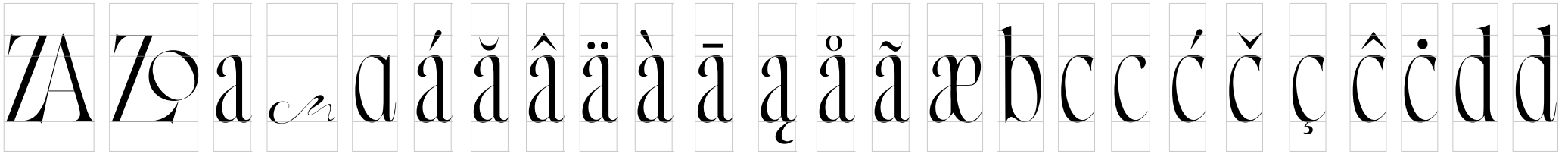
50pt



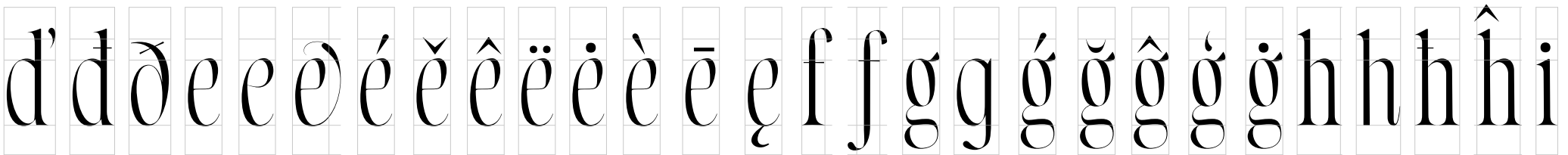
D\_O.dlig E\_O.dlig F\_O.dlig K\_E.dlig K\_I.dlig K\_O.dlig K\_U.dlig L\_A.dlig.ss01 L\_E.dlig L\_I.dlig L\_L.dlig L\_O.dlig L\_S.dlig L\_U.dlig N\_N.dlig



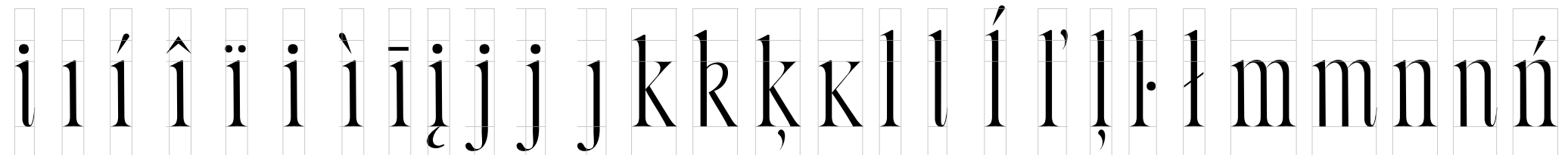
N\_O.dlig O\_C.dlig O\_G.dlig O\_O.dlig R\_E.dlig R\_O.dlig R\_R.dlig R\_S.dlig S\_T.dlig T\_E.dlig T\_H.dlig T\_T.dlig V\_A.dlig W\_A.dlig



Z\_A.dlig Z\_O.dlig a a.ornm a.ss01 aacute abreve a.circumflex a.dieresis agrave amacron aogonek aring atilde ae b c c.ss01 cacute caron coedilla c.circumflex cdotaccent d d.ss01



d'caron dcroat eth e e.ss01 e.ss02 eacute ecaron e.circumflex e.dieresis edotaccent egrave emacron eogonek f f.ss01 g g.ss01 uni01F5 gbreve g.circumflex uni0123 gdotaccent h h.ss01 hbar h.circumflex i



i.ss01 dotless iacute i.circumflex i.dieresis i.loclTRK igrave imacron iogonek j j.ss01 uni0237 k k.ss01 uni0137 kgreenlandic l l.ss01 lacute lcaron uni013C ldot lslash m m.ss01 n n.ss01 nacute

50pt

ň	ṇ	ñ	ŋ	o	o	o	ó	ó	ô	ô	ö	ö	ò	ò	ő	ő	ō	ō	ø	ø
ncaron	uni0146	ntilde	eng	o	o.ss01	o.ss02	oacute	oacute.ss01	ocircumflex	ocircumflex.ss01	odieresis	odieresis.ss01	ograve	ograve.ss01	ohungarumlaut	ohungarumlaut.ss01	omacron	omacron.ss01	oslash	oslash.ss01

õ	õ	œ	p	p	p	þ	q	r	r	í	ř	ṛ	s	ś	š	ş	ŝ	ş	ß	t	t	t	t	t	t	t
otilde	otilde.ss01	oe	p	p.ss01	p.ss02	thorn	q	r	r.ss01	racute	rcaron	uni0157	s	sacute	scaron	scedilla	scircumflex	uni0219	germandbls	t	t.ss01	tbar	tcaron	uni0163	uni021B	

u	ú	ů	û	ü	ù	ű	ū	ȳ	ů	ũ	v	w	w	w	w	w	x	y	y	y	y	y	y	y	y
u	uacute	ubreve	ucircumflex	udieresis	ugrave	uhungarumlaut	umacron	uogonek	uring	utilde	v	w	wacute	wcircumflex	wdieresis	wgrave	x	y	y.ss01	y.ss02	yacute	ycircumflex			

ÿ	ÿ	z	z	ž	ž	fi	st	tu	al	o	0	1	2	3	4	5	6	7	8	9	0	1	2	2	3	3
ydieresis	ygrave	z	zacute	zcaron	zdotaccent	f_i	s_t.dlig	t_u.liga	ordfeminine	ordmasculine	zero	one	two	three	four	five	six	seven	eight	nine	zero.osf	one.osf	two.osf	two.ss01	three.osf	three.ss01

50pt

four.osf	five.osf	five.ss01	six.osf	seven.ss01	eight.osf	nine.osf	fraction	uni2003	period	comma	colon	semi colon	ellipsis	exclam	exclam down	question	question down	period centered	bullet	asterisk	numb rsign	slash	backslash	hyphen	endash

emdash	underscore	paren left	paren right	brace left	brace right	bracket left	bracket right	quotesinglebase	quotedblbase	quotedblleft	quotedblright	quotelleft	quoteright	guillemotleft	guillemotright	guilsinglleft	guilsinglright	quotedgebl	quotesingle	uni0E3F	uni2661	heart	uni2766	at

ampersand	paragraph	section	bar	dagger	daggerdbl	cent	dollar	Euro	sterling	yen	plus	minus	multiply	divide	equal	asciitilde	asciicircum	percent	perthousand	arrowup	uni2197	arrowright

uni2198	arrowdown	uni2199	arrowleft	uni2196	arrowboth	arrowupdown	uni0307	uni0326	dieresis	dieresis.case	dotaccent	grave	acute	hungarumlaut	circumflex	caron	breve	ring	tilde	tilde.case	macron	cedilla	ogonek

20pt

2025 Resistenza Type Foundry  
[www.rsztype.com](http://www.rsztype.com)

Rsz Type S.L.  
Calle Cádiz 57 p11 - 46006 Valencia - Spain